

industrial burners

novanta-cinquecento-mille series

INDUSTRIAL

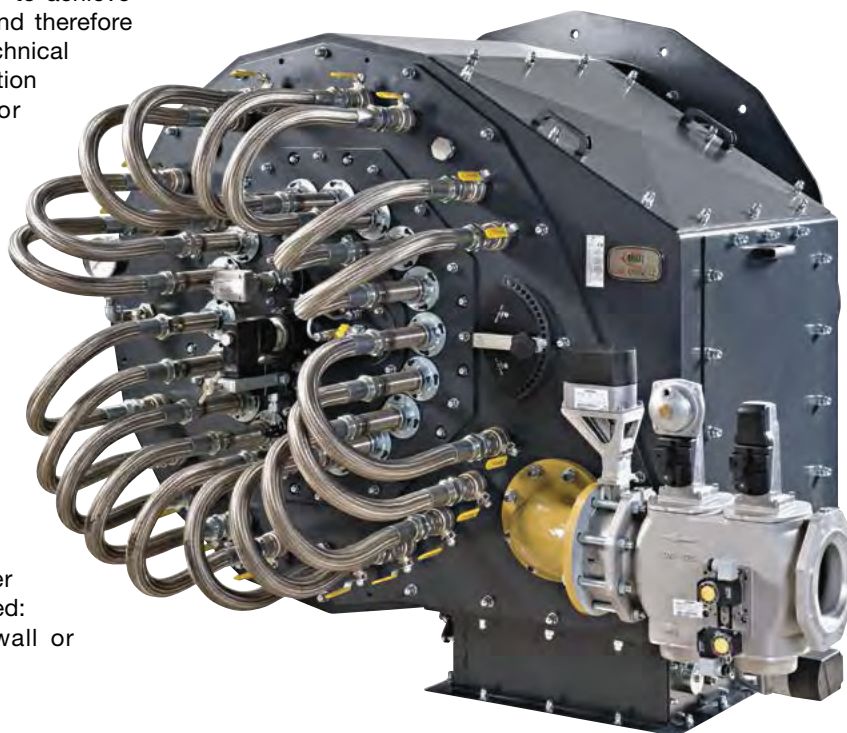
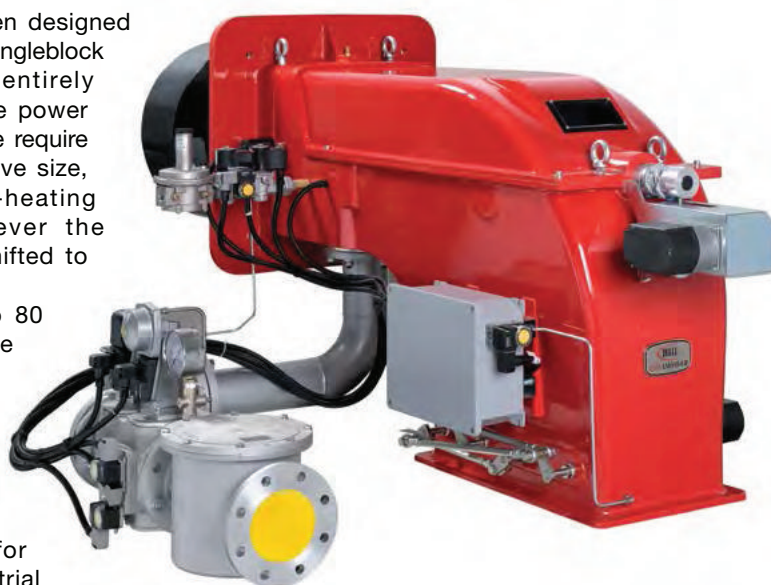
BURNERS FOR INDUSTRIAL APPLICATIONS WITH SEPARATE FAN

These industrial burners have been designed for all those applications in which singleblock models are poorly suited or entirely inadequate, such as wherever the power values at the firing would otherwise require the use of built-in fans of excessive size, whenever combustion air pre-heating is provided, or again, whenever the primary noise source must be shifted to soundproofed areas.

The range runs from 264 kW to 80 MW power in different constructive versions as required by the type of final system or specific client needs.

Aluminium casting is usually used for the lower power models (up to 19 MW), while steel construction is adopted for higher power models. This industrial burner design project was developed to obtain the greatest versatility in order to achieve the objectives posed by the client, and therefore in respect of the widest range of technical specifications. For example, combustion heads with air inlet from above or below the firing, axial or tangential air flow, or registers for turbulence adjustment and other features can be provided. This means that the machines can be personalised as required by size and performance in different industrial sectors that offer differ widely one from another. All the combustion heads are obviously available in the versions for liquid, gaseous or mixed fuels. Personalisation in these cases is almost inevitable and entirely feasible with our range, and all such requests are carefully analysed, one by one. Each system can be further distinguished by the equipment provided:

- built-in or separately-mounted (wall or console) control panels
- electronic or mechanical adjustment
- oxygen flow control
- flue gas re-circulation
- combustion air heated up to 200°C
- combustion oil thrust unit
- combustion oil heating unit





TECHNICAL DETAILS

TN series heavy oil viscosity up to 400 cSt at 50°C (50°E at 50°C)

Type	Min modulation output kW	Min application output kW	Max output kW
TN90	264	1.330	1.900
TN91	698	1.465	2.093
TN92	849	1.791	2.558
TN510	1.314	2.767	3.953
TN515	1.628	3.419	4.884
TN520	2.326	4.884	6.977
TN525	2.000	6.825	9.750
TN1030	2.500	9.100	13.300
TN1050	3.500	10.850	15.500
TN1080	3.500	13.300	19.000



TPBY series heavy oil pneumatic atomization with viscosity up to 4000 cSt at 50°C (503°E at 50°C)

Type	Min modulation output kW	Min application output kW	Max output kW
TPBY90	670	1.400	2.000
TPBY91	500	1.750	2.500
TPBY92	700	2.100	3.000
TPBY510	1.100	3.500	5.000
TPBY515	1.200	4.200	6.000
TPBY520	1.400	4.900	7.000
TPBY525	2.000	6.825	9.750
TPBY1030	2.550	9.100	13.300
TPBY1050	3.100	10.850	15.500
TPBY1080	3.800	13.300	19.000



HTP series dual fuel gas/light oil

Type	Min modulation output kW	Min application output kW	Max output kW
HTP90A	320	1.610	2.300
HTP91A	480	1.869	2.670
HTP92A	480	2.135	3.050
HTP93A	550	2.870	4.100
HTP512A	600	3.150	4.500
HTP515A	770	3.640	5.200
HTP520A	1.000	4.480	6.400
HTP525A	2.000	6.825	9.750
HTP1030	2.500	9.100	13.300
HTP1050	3.500	10.850	15.500
HTP1080	3.500	13.300	19.000

